

8th-12th Grade Family Survey Results

20/21 responses received

This group represents students who have completed 1-3 years with Meade Schools.

Closed response questions ranged from 80%-90% positive responses (rating of 4 or 5).

Q1- 90% positive

Q2- 80% positive

Q3- 90% positive

Q4- 85% positive

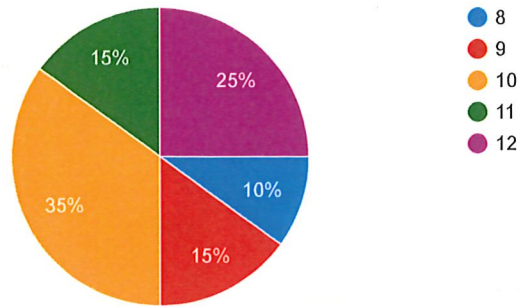
Open response themes:

- Transportation challenges
- Enrollment fees
- Desire for Fowler to be able to offer a secondary program
- Many parents are satisfied and support keeping the agreement

Student Grade

 Copy

20 responses

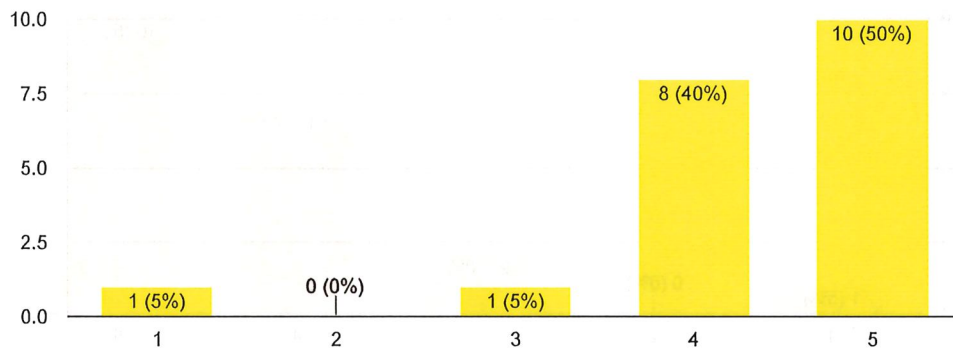


Survey Questions

My child is receiving a quality education while attending Meade schools.

 Copy

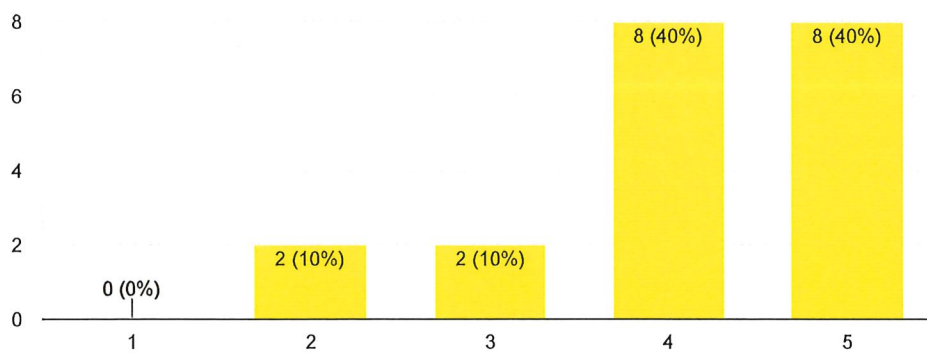
20 responses



My child's teachers provide the necessary support and communication for my child.

 Copy

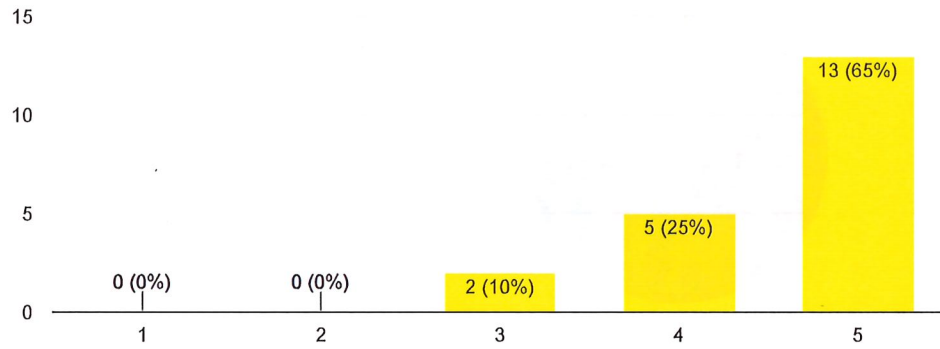
20 responses



My child feels safe and secure attending Meade schools.

 Copy

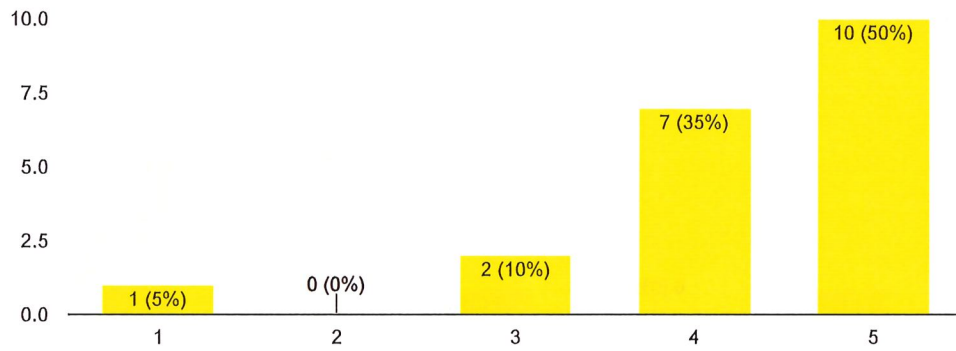
20 responses



As a parent, I am happy with my child's education at Meade schools.

 Copy

20 responses



Open Response

If you could make any suggestions to the Fowler School Board with regard to the Fowler-Meade cooperative agreement, what would it be?

16 responses

As a parent, I wanted my kids to love high school, participate in high school, and have friends. I love Fowler and wish we had enough students to make that happen but in truth we don't. The agreement has allowed my child the opportunity to learn how to make changes work. Change is going to happen when they are adults and they need to learn how to meet new challenges.

Keep the agreement, the kids are being successful.

I want to disengage from the Fowler-Meade agreement and either explore alternatives coop agreements with other districts or bring back Fowler Jr/Sr High.

The enrollment fees of Meade are an adjustment after no fees at Fowler. Maybe Fowler could cover these fees for some or all students.

The Fowler and Meade Rec need to be working together to develop partnerships and friendships between the kids earlier.

School Fees & School Supplies- I heard the elementary school fees were still being covered by the district, so why doesn't the district cover the school fees and school supplies for students attending at Meade?

Opportunity for students to wait inside the grade school building for the bus if the weather is poor.

N/A

Have better communication with parents as to what events and times that transportation will be available.

At this time I do not have any suggestions. I am satisfied.

I think it is the best thing that has happened to my student in a long time.

Provide a school facility and education local in Fowler for the future of our kids and community.

Continue the Fowler-Meade cooperative agreement.

I think you guys are doing a good job with it. Meade is one of the better schools we've had our child in.

Possibly better options for transport for extra-curricular activities for those who may not have access to transportation.

None

What questions did we not ask or what additional information would you like to share with the Fowler School Board?

13 responses

When considering the future of the agreement, please remember it is for the kids, to give them a quality education. As an educator, I believe in allowing kids to become leaders in every opportunity they are given.

We are happy with the decision to go to Meade. Our child likes the learning platforms much better because they have due dates.

Happy with sports and that there is opportunity to earn a spot on the team.

Though we loved Fowler, my child is doing awesome.

As a parent that has been through the Meade School District, I'm not in favor of USD 226. The administration seems to only accept students that are athletically invested and are quality athletes. It is not every student, every day motto and its disheartening to say the least. The reason Fowler was frowned on and an agreement was forged was due to no in person teaching. They now have classes that are Ski-Can taught in Meade.

We feel like the agreement with Meade has been a good solution for our child. Going to Meade has had a positive social impact in helping my child find friends. We are thankful for some opportunities our child has had at Meade that they wouldn't have had at Fowler. However, we miss some things that were unique to Fowler.

If the cooperative agreement continues, we would want it to be with Meade.

The MJH teachers made an intentional effort to welcome our child and us as parents during 7th grade.

One thing we have found challenging is trying to navigate how to get our child between buildings in Meade for practices, especially during basketball season. In general, we lack a support network within Meade because our child didn't grow up there and we don't have relationships with other parents in Meade to call upon to help us out. This has improved with time but is still a challenge.

The sports transportation works out great, but there are some times that the Fowler kids get home way too late from a game and we can't go pick up our child in Meade that late.

N/A

Overall I think you have done a great job with the transition. I hate that we can't watch our kids in Fowler uniforms and see them use the facilities and walk the stage at Fowler, but I understand.

Communication about student dismissal for sports is not very clear. Some of the intercom systems do not work well or need improvement, too.

Is there any way for Fowler students to have more access to the Fowler Dome for an open gym time? I would like to see the Dome used more for athletic activities than just organized school sports events.

I feel like maybe some of the teachers in Fowler should learn how to care for all children not just the ones that have a better life in their opinion. Some of the most uncaring people in Fowler work in that school. My student made D's and F's there. He is making A's and B's in Meade.

None

7th Grade Family Survey Results

7/8 responses received

This group represents students who have begun their first year at Meade Junior High.

Closed response questions ranged from 71%-86% positive (rating of 4 or 5). Remaining responses were neutral (rating of 3). There were no negative responses (rating of 1 or 2).

Q1- 86% positive

Q2- 71% positive

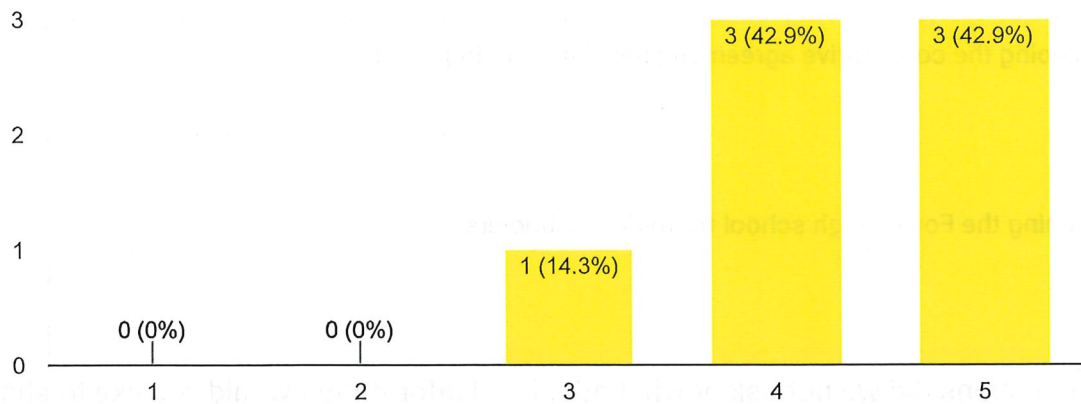
Open responses:

- Factors parents consider in making their decision-
 - Supporting the Fowler board's decision
 - Travel and transportation
 - Rec sports
 - Adjusting to a new environment
- Suggestions to the BOE-
 - Continue the agreement with Meade
 - Reopen middle school at Fowler
 - Consider adding homework at elementary level to prepare students
 - Continue the MJH visit at the end of 6th grade

My child's teachers provide the necessary support and communication for my child.



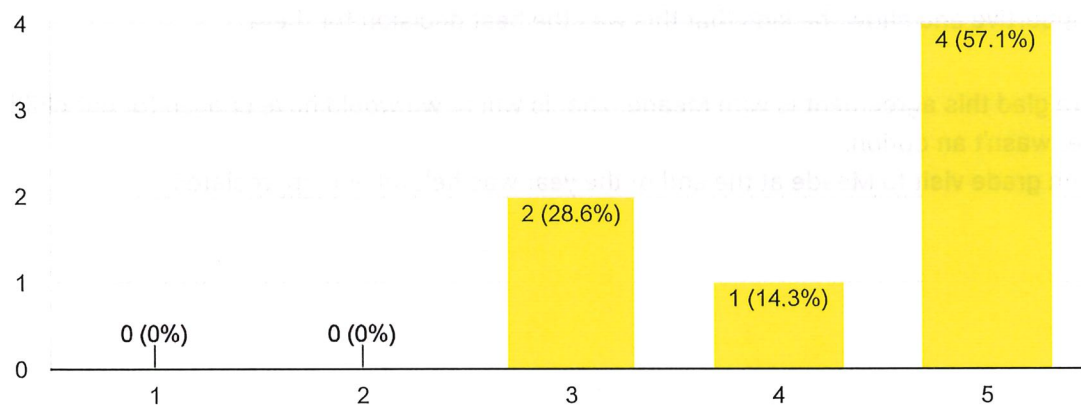
7 responses



My child feels safe and secure attending Meade schools.



7 responses



Open Response

What are the most significant factors you consider(ed) when thinking about sending your child to Meade schools?

4 responses

The board decided this and we supported the board's decision.

Being supportive of the plan Fowler had in place.

Transportation provided.

Having our kid play Rec sports with Meade to develop friendships before the transition.

Keeping siblings together.

Traveling,road

Him going to a new school environment and adjusting.

If you could make any suggestions to the Fowler School Board with regard to the Fowler-Meade cooperative agreement, what would it be?

4 responses

Keep doing the cooperative agreement; my child is doing great.

N/a

Reopening the Fowler high school for middle schoolers

None

What questions did we not ask or what additional information would you like to share with the Fowler School Board?

4 responses

Homework needs to be considered in 5/6 so kids can get used to it.
Be supportive and show the kids that this was the best decision for them.

We are glad this agreement is with Meade. That is where we would have chosen for our child if Fowler wasn't an option.

The 6th grade visit to Meade at the end of the year was helpful and appreciated.

N/a

None

This content is neither created nor endorsed by Google. [Report Abuse](#) - [Terms of Service](#) - [Privacy Policy](#)

Google Forms

5th/6th Grade Family Survey Results

16/16 responses received

This group represents the next two classes of students to be impacted by the agreement.

Supportive of the agreement with Meade:

25% positive (rating of 4-5)

25% neutral (rating of 3)

50% negative (rating of 1-2)

Where will your child go to school in middle school?

Fowler- 3

Minneola- 2

Meade- 1

Ashland- 1

Home School- 1

Unknown- 3

Factors parents consider in making their decision:

- Proximity to parent
- Transportation
- Social-emotional health and bullying
- Administration
- Differences between teaching systems at Fowler and Meade
- Differences in schedules between Fowler and Meade
- Community dynamics

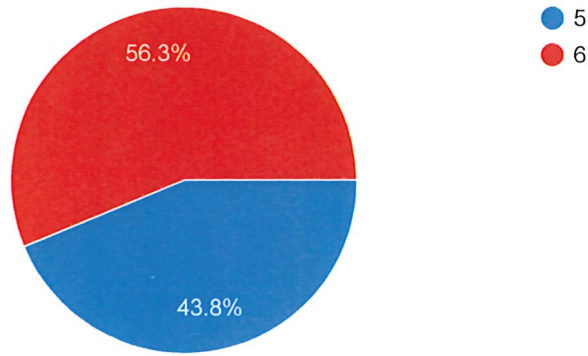
Suggestions to the BOE:

- Reopen schools at Fowler

Student Grade

 Copy

16 responses

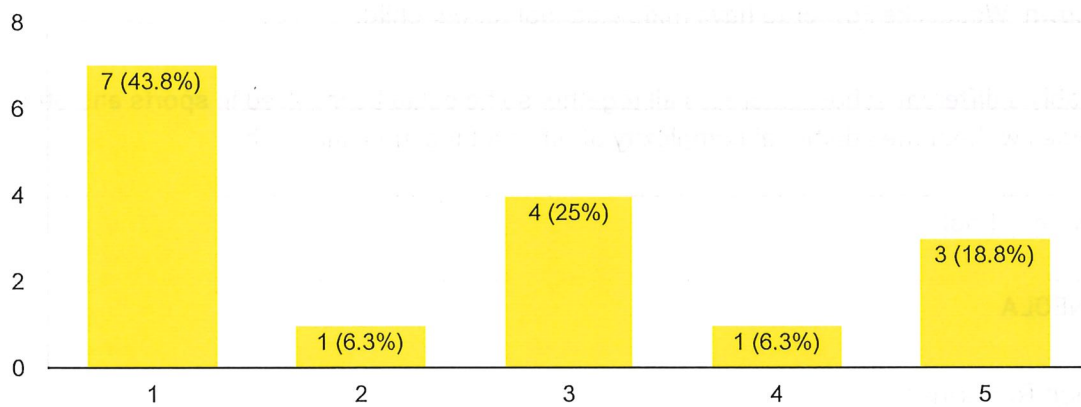


Survey Questions

Are you supportive of continuing the education agreement to send Fowler students in grades 7-12 to Meade?

 Copy

16 responses



If you had to make a decision today, where would you send your child(ren) once they get to middle school?

15 responses

Fowler

Minneola

Meade

Home School

Ashland

If Fowler had adequate class sizes, it would be Fowler.

We're planning on moving to avoid having to go to Meade.

Unknown- Would like Fowler to have middle school for our child.

Probably a different school where it's all together so he could be involved in sports and other activities without the additional complexity of different location and such.

Different school

MINNEOLA

Open Response



What are the most significant factors you consider when thinking about sending your child to Meade schools?

15 responses

It's close

How many times he will call for his health problems.

All or most of his bullies go to Meade now.

Transportation if he has to stay later than school is out.

There are currently no scenarios that would encourage us to send our child to Meade.

When we moved to Fowler we brought our eligible-aged child to school at Fowler to be part of the solution. Don't want our child to go to a school where learning is sacrificed and bullying ensues often.

Prior administration (worked there)

Location

Transportation, number of students, for my kid's social health, transition from Fowler's teaching system to Meade's

My child went to Meade from PK-6th grade. Thru those years he was constantly bullied and told he didn't belong. We pulled him at the end of 6th grade because he was so frustrated with the students and staff that continuously told him he was the problem. We decided to hold him back so that he could grow in his confidence. Fowler has been very good for him.

the environment

Meade has a lack of bullying policies, lack of individualized education, and the thought that Fowler in general is "sub-par" in the eyes of several administrators and staff.

Travel on the bus and being close to home.

Further distance from my place of work, community dynamics, continued favoritism of certain students, location of ball games..

I have reason to not send them to meade

Traveling ,the road

NOT REALLY SURE YET



If you could make any suggestions to the Fowler School Board with regard to the Fowler-Meade cooperative agreement, what would it be?

12 responses

Nothing yall are doing great

Think of the kids in sports who live in Fowler. Also, the school hour/day changes compared to now as well with my younger two kids in school.

Disengage from the agreement. Get serious with restoring Fowler USD 225 grades 7-12.

None

It may be good for some students but if you have kids that are different in any way they will struggle at Meade. Acceptance is not something that Meade is good at.

Try to keep the children at Fowler school because it is a wonderful place where they are growing with more care, sympathy, attention, and respect.

Fowler needs and deserves a community school. The school needs to listen to the community this time.

Fowler needs to start looking for our kids future and not depend on Meade or Minneola for our education. Start looking into providing middle school in Fowler.

I am hesitant to contribute to the conversation since my son will not be in this school district next year.

Re-open the high school for middle schoolers in Fowler

TO HAVE FOWLER SCHOOL THE WAY IT WAS BEFORE THE SWITCH

This content is neither created nor endorsed by Google. [Report Abuse](#) - [Terms of Service](#) - [Privacy Policy](#)

Google Forms

